

General Specifications

Model LL1100 PC-Based Parameters Setting Tool

GS 05G01A01-01E

■ General

The LL1100 PC-Based Parameters Setting Tool is a software package used to set the setup parameters and operation parameters of the US1000 Digital Indicating Controller from a personal computer. This tool allows users to download, upload, and print out parameters, display PV trend data during PID tuning, etc., and has an online help function that provides operation guidance.

■ Functions

Parameter Setting Function:

Sets and changes the US1000's control parameters such as the controller mode (US mode), universal input/output selection, setup parameters, and operation parameters.

Tuning Function:

This function is used to tune the PID parameters of the US1000 controller. The PID parameters can be tuned and auto-tuning function executed while the PV, SV, and MV trend graphs are being displayed on a personal computer screen.

Downloading, Uploading, and Comparing Parameters

When the US1000 controller operation is stopped, users can download the created parameter data to the controller and upload parameter data from the controller. It is also possible to compare the parameter data created using this tool with the data in the US1000 controller.

File Management Function:

This function allows the user to save the parameter data created with this tool and those uploaded from the US1000 controller onto the hard disk of a personal computer or a floppy disk. It is also possible to compare the parameter data created with those in parameter files created in the past.

Printout Function:

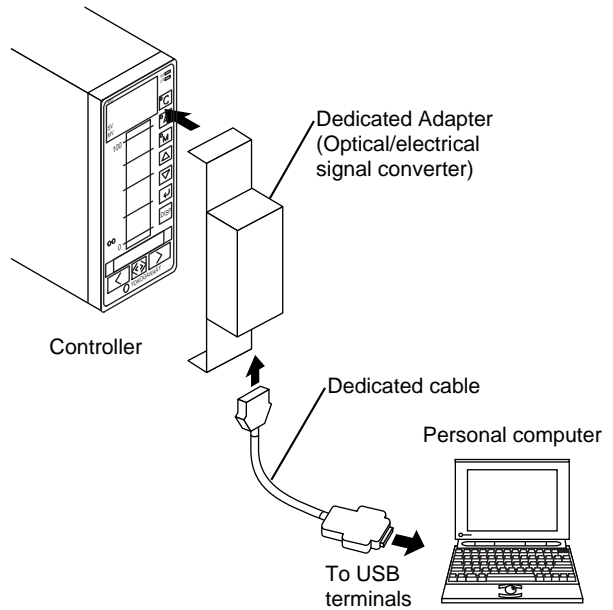
Parameter data can be printed out from a printer connected to a personal computer.

■ Connection between a Personal Computer and the US1000

[Via Dedicated Adapter]

Users can upload and download parameter data to and from a personal computer by connecting a dedicated adapter to the US1000 front panel.

Controllers that can communicate via a dedicated adapter have the model and suffix code: US1000-xx

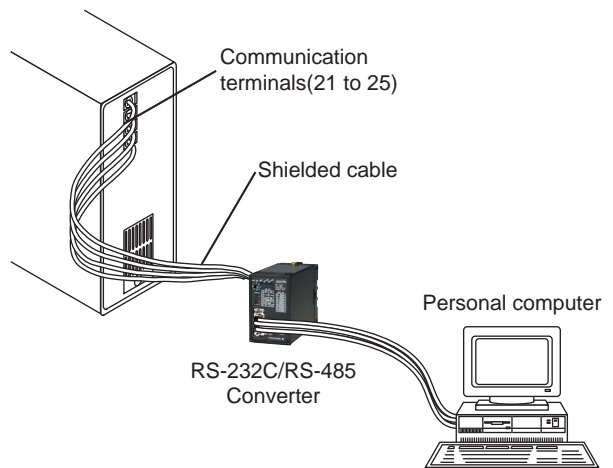


[Via Communication Terminals of US1000]

Users can also upload and download the parameter data to and from a personal computer via the communication terminals in the back of the US1000 controller. An RS-232C or RS-485 converter (ML2) is needed to do this.

Controllers that can communicate via communication terminals have the model and suffix code: US1000-xx/A10

Terminals at the rear of the US1000



Operating Environment

Personal Computer:

- Windows 2000/XP-enabled IBM PC/AT compatible machine
- Operating system: Windows 2000 (Professional)/XP (Home Edition/Professional)
- CPU: 300-MHz Pentium processor or superior is recommended.
- Main memory: 128 MB minimum is recommended.
- Hard disk: Memory space required to store the tool's programs; 5 MB
Memory space required to store the parameter data; 2 MB minimum
Memory space required to store the driver for USB-Serial converter; 1 MB
- CRT display: 800 × 600 pixels or superior
Smaller fonts should be used.
Should be capable of handling at least 256 colors.
- USB communication port: One channel (COM1 to COM16), with SeriesA connector, compliant with USB Specification Rev1.1.
- CD-ROM drive: Required for installation.
- Printer: Required for printing. Windows 2000/XP-compatible A4-size printer

Dedicated Adapter

- Communication method:
Controller side; optical, contactless, bidirectional serial communication
Personal computer side; compliant with USB Specification Rev1.1
- Power supply: Supplied from USB bus power (no internal battery)
Input rating; 4.4 to 5.25 V DC, 100 mA (including a dedicated cable)
* No plug for external power source, no power switch
- Ambient temperature range: 0 to 50°C
- Ambient humidity range: 20 to 90% RH (no condensation)
- Transport and storage conditions: -20 to 65°C, 10 to 90%RH (no condensation)
- Dust- and water-proof construction: Not applied.
- Standard: CE Marking (EMC only)

Dedicated Cable

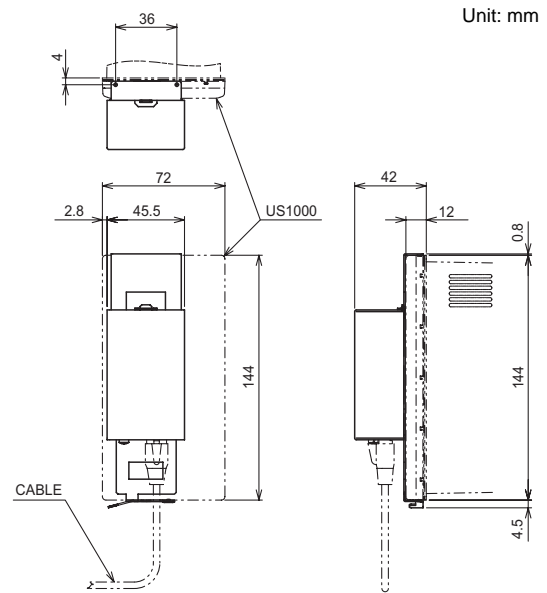
- Built-in USB-Serial converter
- Personal computer side: USB SeriesA plug
- Adapter side: RJ45 (8-pin) plug
- Cable length: Approx. 2.7 m

Packaged Contents

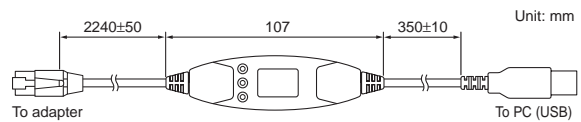
- Software supplied: CD (1 disk) LL1100/USB converter driver software
- Dedicated cable and adapter:
1 set for connecting a personal computer and the US1000 optical communication part for light loader
- Instruction manual: PC-Based Parameters Setting Tool manual (1 book)

External Dimensions

Dedicated Adapter



Dedicated Cable



Model and Suffix Codes

Model	Suffix code	Description
LL1100		PC-Based Parameters Setting Tool
	-U10	Model for use with IBM PC/AT compatible machine (common to English and Japanese version), USB connection

Trademarks

- Windows 2000/XP are trademarks of Microsoft Corporation, U.S.A.
- Pentium is a registered trademark of Intel Corporation, USA.
- Ethernet is a registered trademark of XEROX Corporation, USA.
- Other proper nouns such as trade names and company names are trademarks of their respective companies.